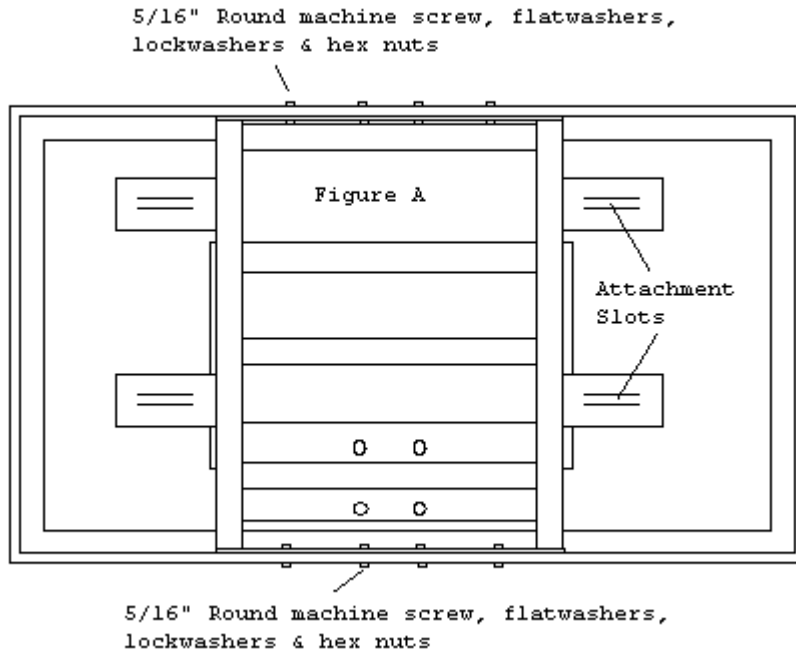


FIRST TEAM SPORTS, INC

FT36-HFM Set Up Instructions H-Frame Backboard Support Structure



Bill of Materials

A (1) FT36-HFM Backboard Support	F (8) 3/8"x 1 1/2" Carriage Bolt
B (8) 5/16" x 1" Round Machine Screw	G (8) 3/8" Flatwasher
C (8) 5/16" Flatwasher	H (8) 3/8" Lockwasher
D (8) 5/16" Lockwasher	I (8) 3/8" Hex Nut
E (8) 5/16" Hex Nut	

*** Note: Immediately unpack components and cross check with bill of materials. Report any shortages to First Team customer service at 1-888-884-6677.**

1. Unpack and lay backboard face down on flat surface.
2. Next, assemble the H-Frame backboard mounting to the backboard as shown in Figure A. Use the (8) 5/16" machine screws, flatwashers, lockwashers and hex nuts. Insert the machine screws with the heads of the screws on the OUTSIDE of the backboard frame. Use the flatwashers, lockwashers and hex nuts to fasten the screws. If your backboard is tempered glass, check to make sure all four steel grommets are located at the rim holes, if any are missing check in the box. If grommets are missing and cannot be located, DO NOT proceed with assembly, call First Team immediately. If your backboard is acrylic you must remove and discard the plastic shipping block from the backboard joint to complete this step. Additionally, if you purchased an acrylic backboard you should have received two rubber gaskets enclosed with the backboard. Place one gasket between the H-Frame backboard mount and

the backside of the backboard. You will use the other gasket later during assembly. Rubber gaskets are necessary for acrylic boards only.

3. The H-Frame backboard mount has four attachment slots (see Figure A). If the support structure you are attaching the Backboard/H-Frame assembly to has attachment points that match up to these slots, you should attach the Backboard/H-Frame assembly to the structure now. Attachment should be made using the (8) 3/8" carriage bolts, flatwashers, lockwashers and hex nuts provide with the H-Frame. Attach all (8) bolts finger tight first. Then, starting on the upper left hand side (from behind board) final tighten them working in a clockwise fashion around the backboard. If you are unable to utilize the H-Frame attachment slots for mounting to your structure you should hang the Backboard/H-Frame assembly in whatever way is necessary for your application.

4. Mount the rim to the Backboard/H-Frame assembly using the hardware supplied in the rim box. If you purchased an acrylic backboard make sure to place the second rubber gasket (included with backboard) between the face of the backboard and the backplate of the rim. Trim gasket if necessary. Use a level to make sure rim is level side to side before tightening nuts. **DO NOT OVERTIGHTEN NUTS!** If the lockwasher is fully compressed, it's tight enough. Attach coverplate to rim and hang net.

**FIRST TEAM SPORTS, INC.
902 COREY ROAD
HUTCHINSON, KS 67501
TOLL FREE: 888-884-6677**